

# **Interprofessional Primary Care Teams (IPCT) Expansion Initiative**

---

Data Collection & Reporting Webinar

JUNE 24, 2024



**Ontario  
Health**

# Webinar Agenda

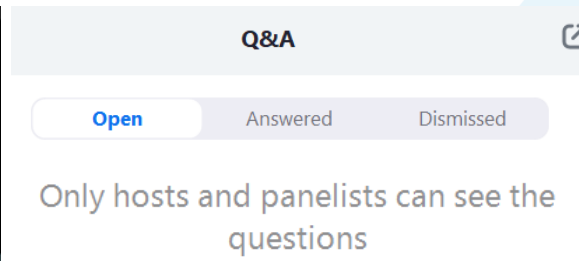
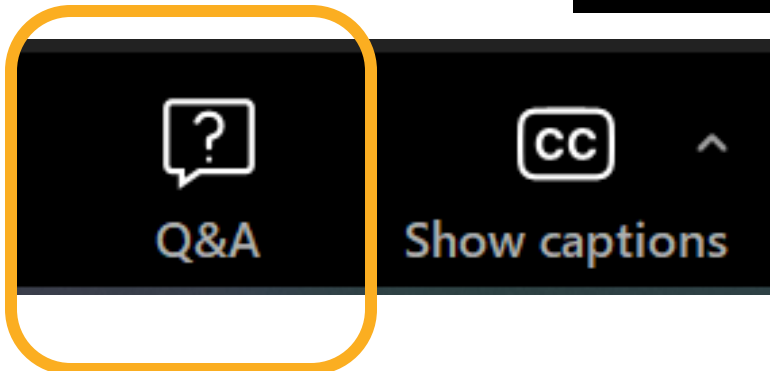
Topic	Presenter	Time
Welcome & Webinar Overview	Sue	3 mins
Land Acknowledgement	Sue	2 mins
IPCT Initiative: Demonstrating Impact	Zahra	10 mins
Data Submission	Cory	15 mins
Q&A	Cory	30 mins

# Housekeeping

- Today's session **will be recorded** so it may be accessed by those who are not able to join us today.
- If you have questions, please **use the Q&A feature** to ask them. If we don't get to your question, we'll do our best to respond after the session.
- Chat is enabled but only to respond to technical issues.

## Meeting Controls

● Recording in Progress



## Post meeting survey

A survey will launch after you leave today's meeting (4 short questions).

***Your feedback is greatly appreciated!***

# Welcome & Overview

---

- Thank you for joining today's webinar for the *Expanding and Enhancing Interprofessional Primary Care Teams* (IPCT) initiative.
- We appreciate your support and efforts in submitting the data
- There are specific reporting requirements that will make it possible for us to collectively demonstrate the impact of this expansion for patients.
- The webinar will discuss reporting impact of the IPCT initiative, address issues with data submission, and provide a walk-through of a dashboard teams will be receiving.
  - There will be time for live questions at the end of the webinar.
  - The webinar material will be shared by email with your organization after the session by your OH Regional Contact.

A wide-angle photograph of a calm lake at sunset. The sky is filled with soft, orange and yellow clouds, with the sun low on the horizon. The water is still, reflecting the colors of the sky. In the foreground, the corner of a wooden dock is visible, made of dark, weathered planks. The background shows a dark, silhouetted shoreline with trees and a few small buildings.

# Land Acknowledgement



# IPCT Expansion: Demonstrating Impact

---

- This IPCT Expansion is the most significant investment in primary care teams in over a decade.
- Data collection and reporting presents an opportunity to collectively demonstrate the impact of this expansion for patients across Ontario
- The primary goal of this expansion is to increase access and attachment to team-based primary care services, particularly in communities with the greatest need and for equity-deserving populations
- Therefore, the data collection will focus on capturing growth in team resources and patients served and patient utilization:
  - The intent is to start with aggregate data collection and reporting and then to transition to record-level reporting to enable more sophisticated data analysis on patient impact.
- This data collection is part of a holistic approach. We will also be capturing milestone progress based on each team's unique Implementation Plan, as well as conducting a research-based evaluation.

# Implementation Progress

*These data should be considered preliminary and are anticipated to evolve*

Region	# of new and expanded IPCTs funded	Hiring on Track**	# of new and expanded IPCTs who are live*	# of IHP FTEs Hired***	# of new patients served***
Toronto	11	7	3		
Central	12	7	7		
East	9	6	2		
West	19	19	14		
North East	12	4	1		
North West	3	1	1		
<b>Provincial Total</b>	<b>66</b>	<b>44</b>	<b>28</b>		

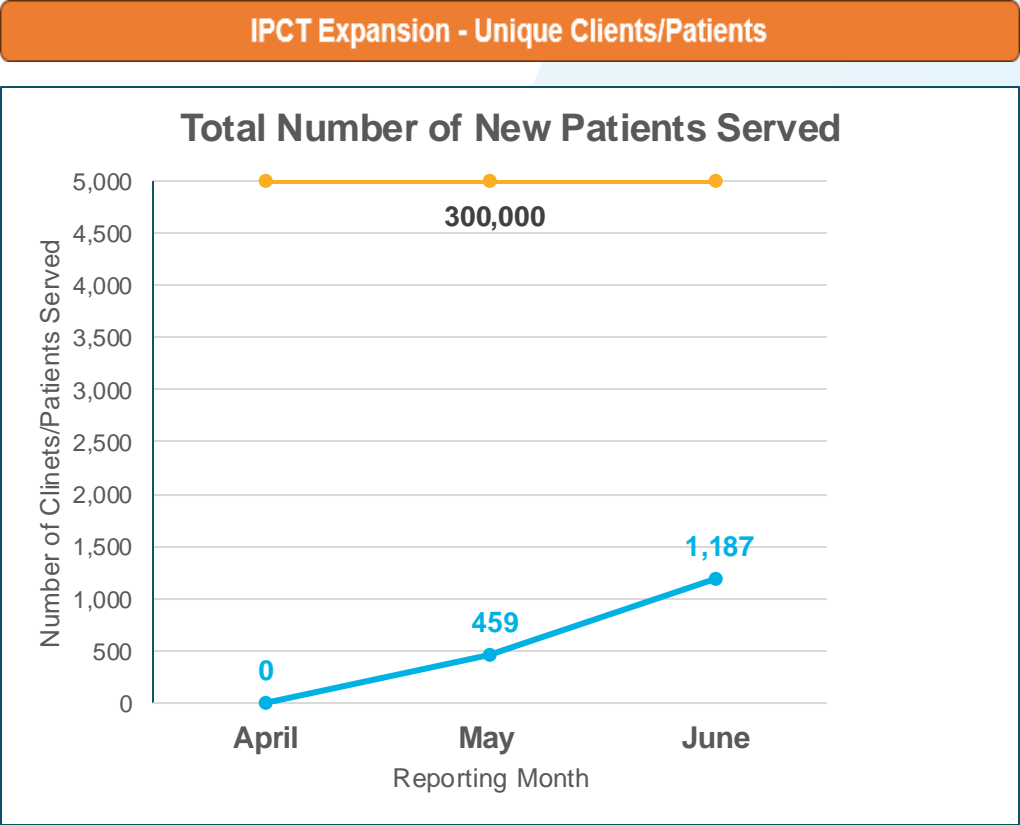
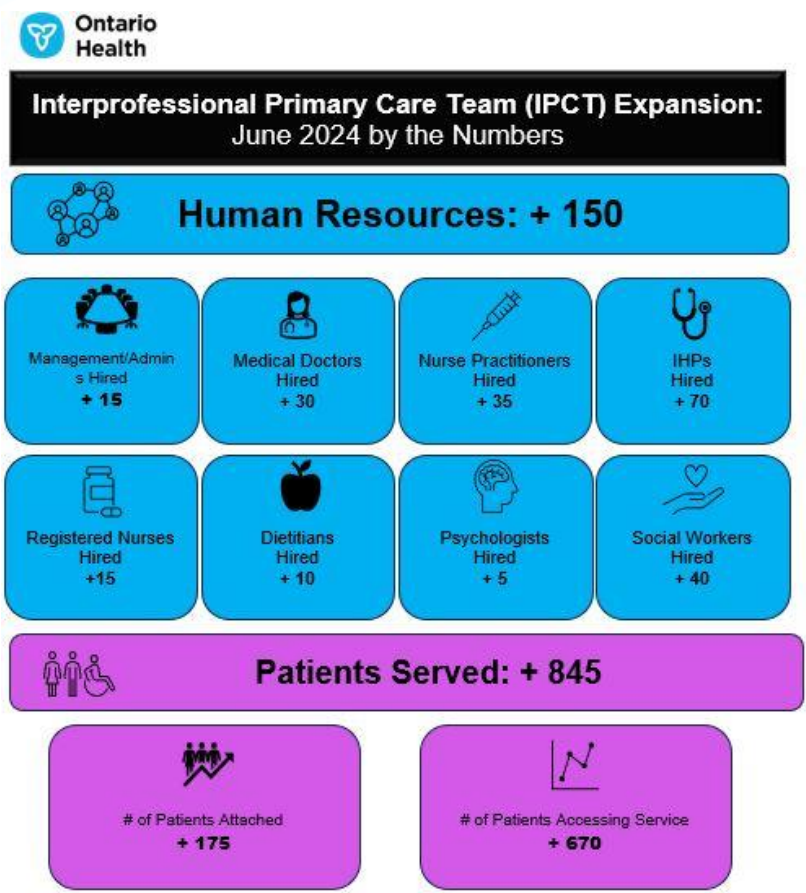
## Notes:

\*By having served at least one new patient/client. This data based on April/May reporting period and 56 out of 66 new and expanded IPCTs (FHTs, NPLCs, and CHCs) who submitted their milestone reporting

\*\* While hiring is reported as on track status for 44 teams out of 56 who submitted milestone reporting, recruitment and retention due to wage parity was a prominent risk identified in Milestone Reporting

\*\*\*Data are in development

# Mock MOH Reporting



The data presented on this slide are entirely fictitious and have been created solely for illustrative purposes.

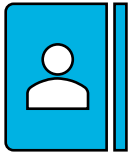


# Data Submission

# Data Submission Status

Region	May 15 Submission		June 15 Submission		
	# of new and expanded EOI Sites	Baseline Providers	Baseline Patients + Visits	May Monthly Aggregate	Data Requiring Further Validations
Toronto	11	11	8	8	4
Central	12	11	7	7	2
East	9	8	4	4	1
West	19	19	16	16	2
North East	12	10	10	10	4
North West	3	3	2	2	1
Provincial Total	66	62	47	47	14

# Data Submission



Organization ID	
Format:	<i>Region Abbreviation-##</i>
Example:	NW-07 <i>(no space)</i>

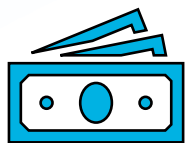


Aggregate Data – Excel File Naming Format	
Format:	<i>Type</i> - Application ID ##### – Monthly Aggregate – <i>Month</i> 2024
Example:	NPLC - Application ID E-50 – Monthly Aggregate – June 2024



Submissions Email (please cc your regional rep.)	
IPCTsubmission@ontariohealth.ca	

# Data Submission – Type of Funding, Type of Visit, Previous Months Data



Please include all fundings including non-government fundings	
All fundings in SRI	<i>TYPE I, II, III, IV... etc.</i>
Reason	All your (admin, health) staff, holistic reporting



All modes of service interactions are included	
<i>Face to face, video, phone... etc.</i>	



Data from previous months don't need to be included	
---	--

# Data Validation - Monthly Aggregation - Provider

Scenario: An organization added 1 FTE of RN in May

Baseline (April)

Administration/Management			Health Human Resources		
Admin/Management Type	# of FTEs Budgeted	# of FTEs Hired	Health Professional Type	# of FTEs Budgeted	# of FTEs Hired
Manager	1	1	Medical Doctor	5	4
HR Manager	2	0	RN	4	2

Please provide overall numbers



Please do not provide only the change



Administration/Management			Health Human Resources		
Admin/Management Type	# of FTEs Budgeted	# of FTEs Hired	Health Professional Type	# of FTEs Budgeted	# of FTEs Hired
Manager	1	1	Medical Doctor	5	4
HR Manager	2	0	RN	4	3

Administration/Management			Health Human Resources		
Admin/Management Type	# of FTEs Budgeted	# of FTEs Hired	Health Professional Type	# of FTEs Budgeted	# of FTEs Hired
			RN	4	1

# Data Validation - Monthly Aggregation - Patient & Utilization

Scenario: An organization added 15 new patients/clients and saw 170 unique patients in May



	Number of patients who are rostered at your organization	Number of patients NOT rostered and NOT attached to another provider	Number of patients NOT rostered and attached to another provide
Baseli ne	50	100	80
May	65 (Total)	170 (Monthly)	100 (Monthly)



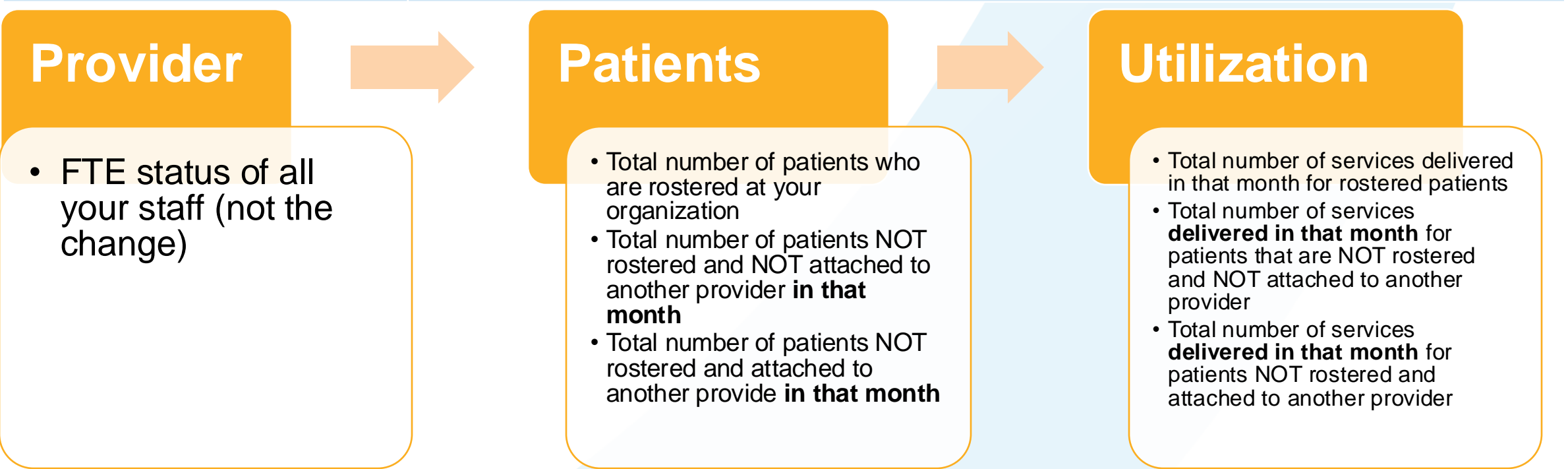
	Number of patients who are rostered at your organization	Number of patients NOT rostered and NOT attached to another provider	Number of patients NOT rostered and attached to another provide
Baseli ne	50	100	80
May	15 (New)	270 (Cumulative)	180 (Cumulative)



# Action Items

Please submit your organizations monthly aggregate on or before the following dates to [IPCTsubmission@ontariohealth.ca](mailto:IPCTsubmission@ontariohealth.ca) Thank you!!

Date	What should be submitted
July 15	June Aggregate: Full report
August 15	July Aggregate: Full report
September 15	August Aggregate: Full report



Q&A

Thank You!!!